

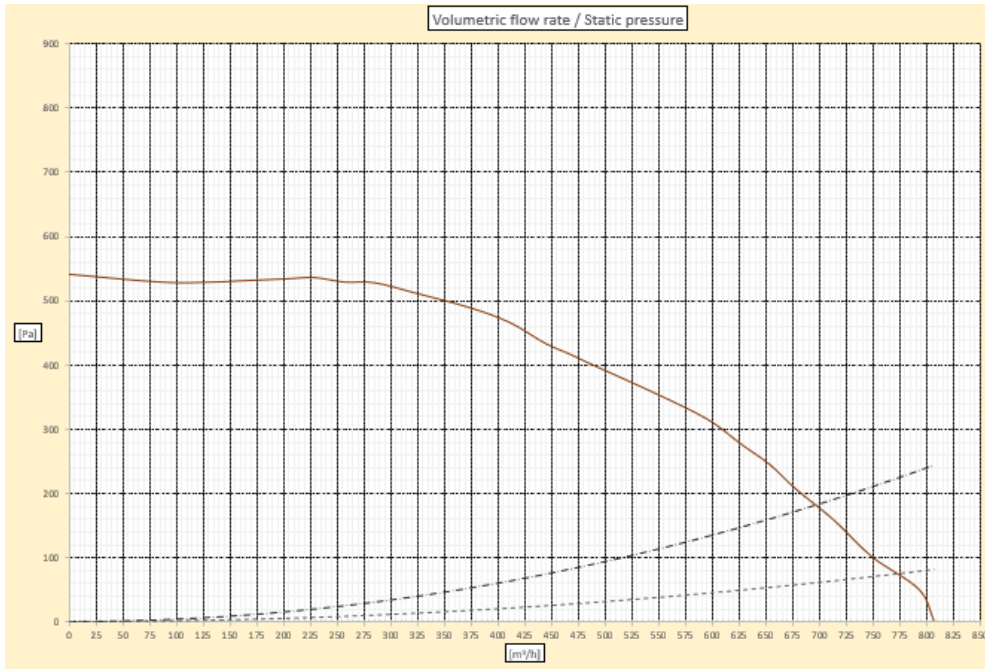
Scheda tecnica / Data Sheet

GALAXY



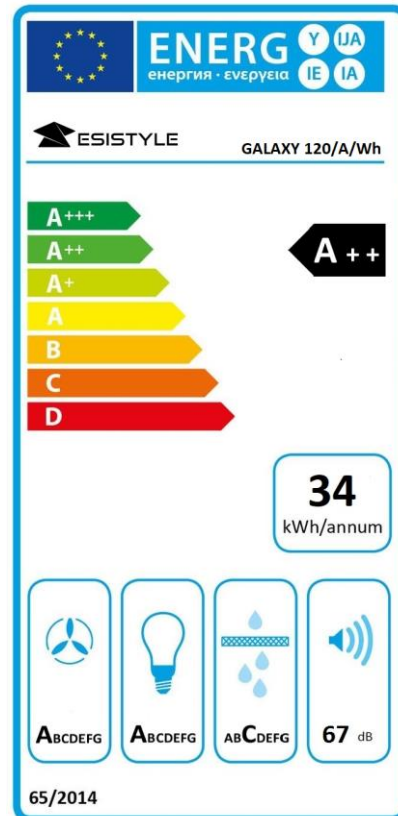
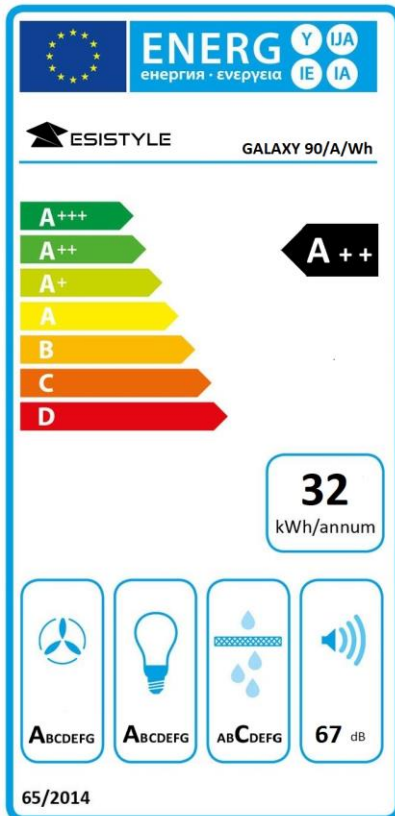
Installazione / Installation		Filtro Grassi / Grease Filter	
Soffitto incasso / Built-in Ceiling		Filtro alluminio / Aluminium filter	
Versione / Version		Alimentazione / Power supply	
Aspirante * / Suction air *		220-240 V / 50-60 Hz	
Finitura / Finishing		Pressione Efficienza Max / Max Efficiency Pressure	
Acciaio e vetro / Steel and Glass		541 Pa	
Colore vetro / Glass color		Portata IEC / Airflow IEC	
Bianco / White		774 m ³ /h	
Comandi / Controls		Portata Intensiva / Booster Airflow	
Radio comando 4V+2i / Remote control 4V+2i		808 m ³ /h	
Motore / Motor		Range Rumorosità / Noise Range	
Brushless		50 – 67 dB	
Aria Pulita 24h /24h Clean Air		Pulizia / Cleaning	
10 min (on) – 50 min (off)		Max vel. 6 min / Max speed 6 min	
Velocità temporizzata / Timed speed		Velocità intensiva / TempORIZED speed	
15 min		5-6 vel. intensiva 6 min / 5-6 intensive speed 6 min	
Illuminazione dinamica / Dinamic light			
Regolazione automatica da 2700 K a 6000 K / Automatic regulation from 2700 K to 6000 K			
Illuminazione / Lighting		Assorbimento totale / Total Absorption	
90 cm	120 cm	90 cm	120 cm
Strip Led 3,4 W	Strip Led 5,6 W	223,4 W	225,6 W

* Disponibile in versione Filtrante / Available in Recirculating version



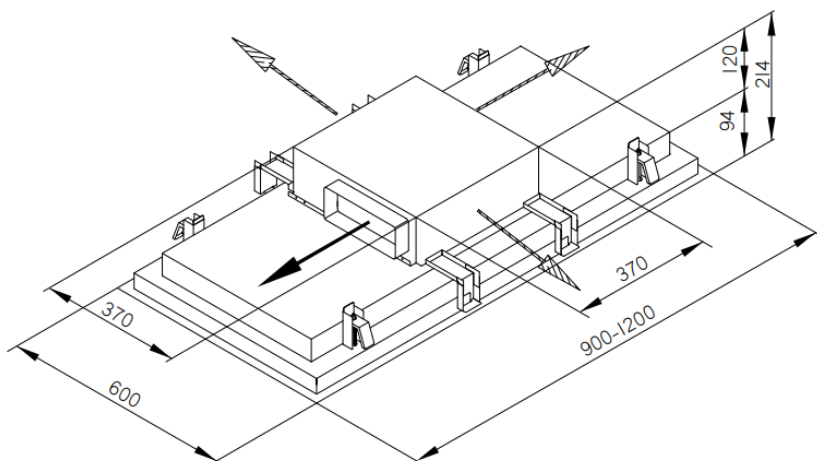
Modelli / Models

GALAXY 90/A/Wh
 GALAXY 120/A/Wh



Misure e dimensioni / Measurements and dimensions

Dim. cappa / Hood Dim.	90 cm	120 cm
Peso netto / Net weight	25 Kg	28 Kg
Peso lordo / Gross weight	31 Kg	35,5 Kg
Volume	0,211 m ³	0,282 m ³
Dim. imballo / Package dim.	98,5 x 69 x 31 cm	128,5 x 68,5 x 32 cm

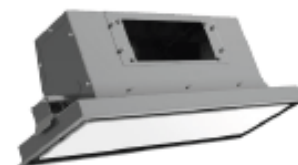


Accessori / Accessories

Kit filtrante / Recycling kit

Codici Kit FC / Kit FC Codes :

- E750000148 ceramico Wh



Misure e dimensioni KIT FC/ KIT FC Measurements and dimensions

Dim. Kit filtrante / Recycling kit Dim.	60 cm
Peso netto / Net weight	5 Kg
Peso lordo / Gross weight	8 Kg
Volume	0.097 m ³
Dim. imballo / Package dim.	65 x 34 x 44 cm

