

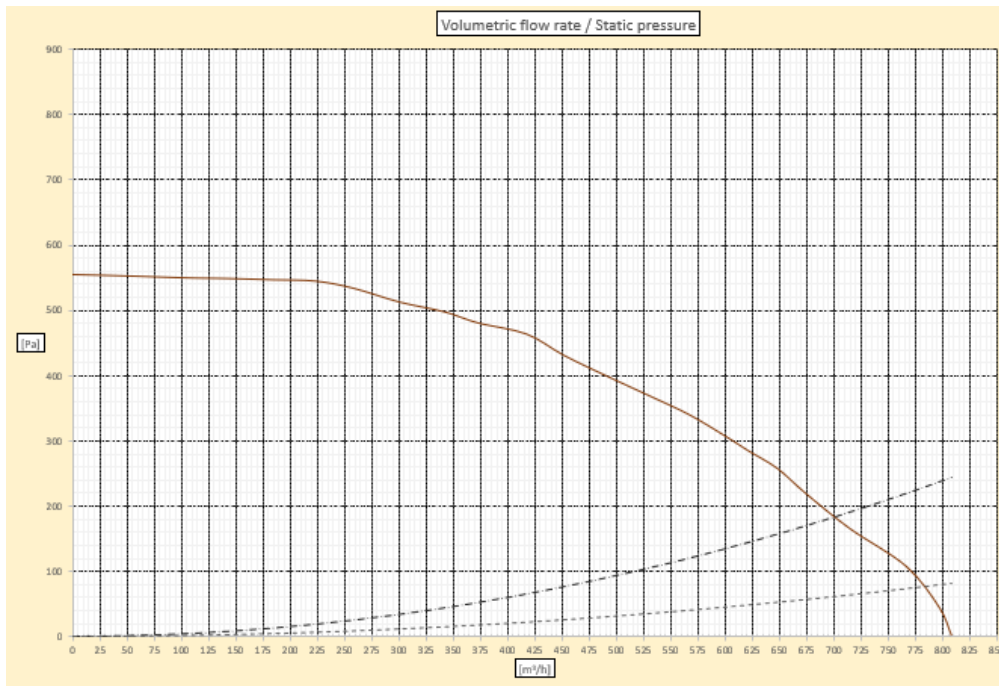
Scheda tecnica / Data Sheet

SATURN



Installazione / Installation Soffitto incasso / Built-in Ceiling		Filtro Grassi / Grease Filter Filtro alluminio / Aluminium filter	
Versione / Version Aspirante * / Suction air *		Alimentazione / Power supply 220-240 V / 50-60 Hz	
Finitura / Finishing Acciaio / Steel		Pressione Efficienza Max / Max Efficiency Pressure 554 Pa	
Colori cappa / Hood colors Nero o Bianco / Black or White		Portata IEC / Airflow IEC 783 m ³ /h	
Comandi / Controls Radio comando 4V+2i / Remote control 4V+2i		Portata Intensiva / Booster Airflow 809 m ³ /h	
Motore / Motor Radiale Brushless / Brushless Radial		Range Rumorosità / Noise Range 50 – 67 dB	
Aria Pulita 24h /24h Clean Air 10 min (on) – 50 min (off)		Pulizia / Cleaning Max vel. 6 min / Max speed 6 min	
Velocità temporizzata / Timed speed 15 min		Velocità intensiva / TempORIZED speed 5-6 vel. intensiva 6 min / 5-6 intensive speed 6 min	
Illuminazione dinamica / Dinamic light Regolazione automatica da 2700 K a 6000 K / Automatic regulation from 2700 K to 6000 K			
Illuminazione / Lighting		Assorbimento totale / Total Absorption	
90 cm	120 cm	90 cm	120 cm
Led frame 21,6 W	Led frame 24,5 W	241,6 W	244,5 W

* Disponibile in versione Filtrante / Available in Recirculating version



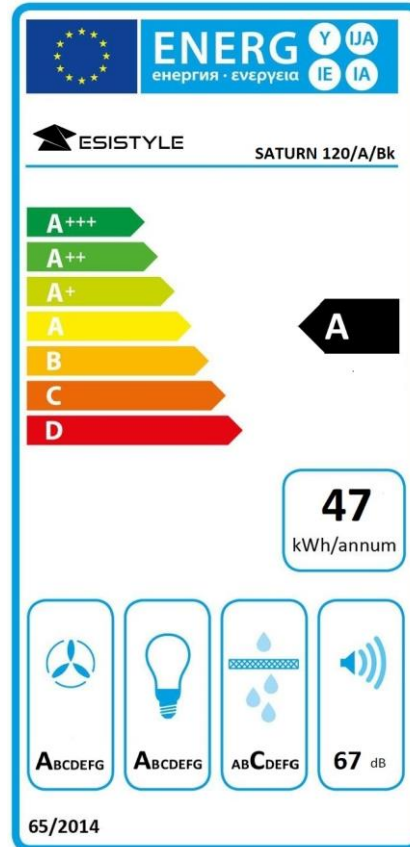
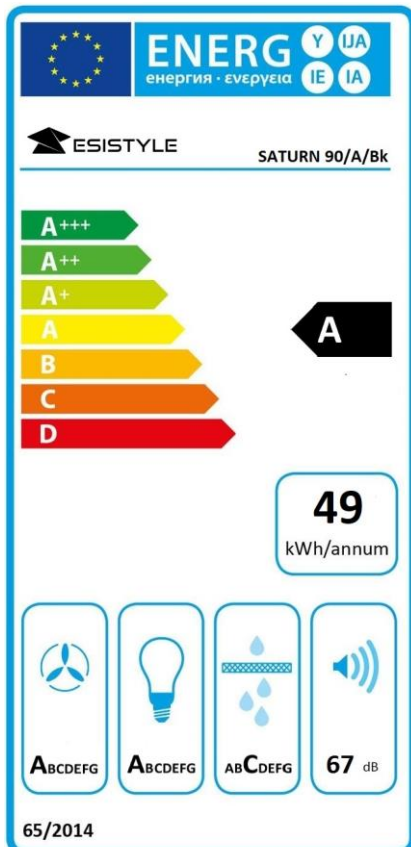
Modello / Model

SATURN 90/A/Bk

SATURN 90/A/Wh

SATURN 120/A/Bk

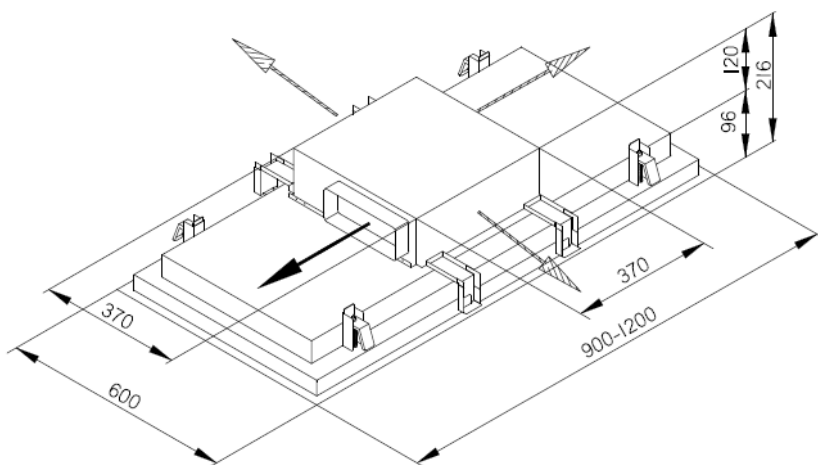
SATURN 120/A/Wh



I valori sono gli stessi per la versione Bianca / The data are the same even for the White version

Misure e dimensioni / Measurements and dimensions

Dim. cappa / Hood Dim.	90 cm	120 cm
Peso netto / Net weight	23 Kg	27 Kg
Peso lordo / Gross weight	30 Kg	34,5 Kg
Volume	0,214 m ³	0,284 m ³
Dim. imballo / Package dim.	98,5 x 69 x 32 cm	129 x 69 x 32 cm

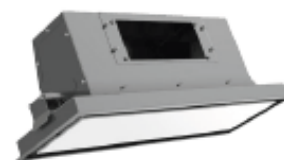


Accessori / Accessories

Kit filtrante / Recycling kit

Codici Kit FC / Kit FC Codes :

- E750000214 ceramico Wh
- E750000215 ceramico Bk



Misure e dimensioni KIT FC/ KIT FC Measurements and dimensions

Dim. Kit filtrante / Recycling kit Dim.	60 cm
Peso netto / Net weight	5 Kg
Peso lordo / Gross weight	8 Kg
Volume	0.097 m ³
Dim. imballo / Package dim.	65 x 34 x 44 cm

