

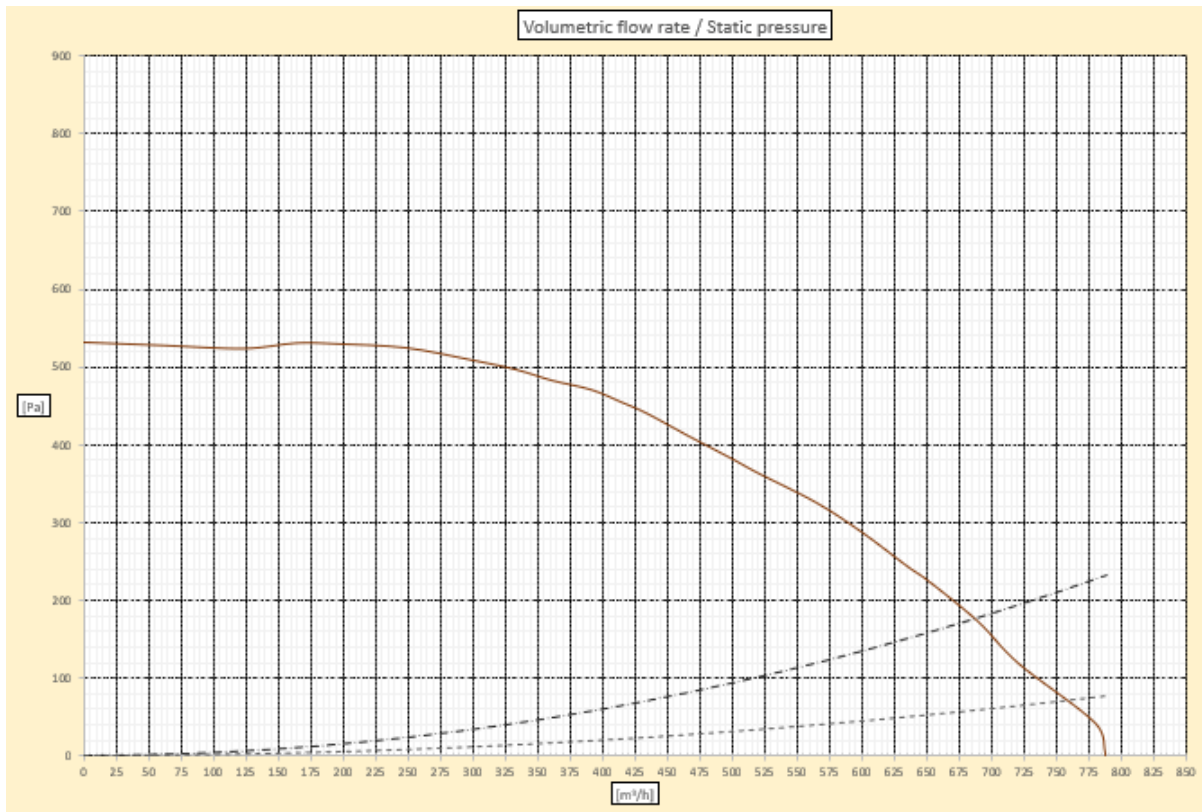
Scheda tecnica / Data Sheet

SOLARIS



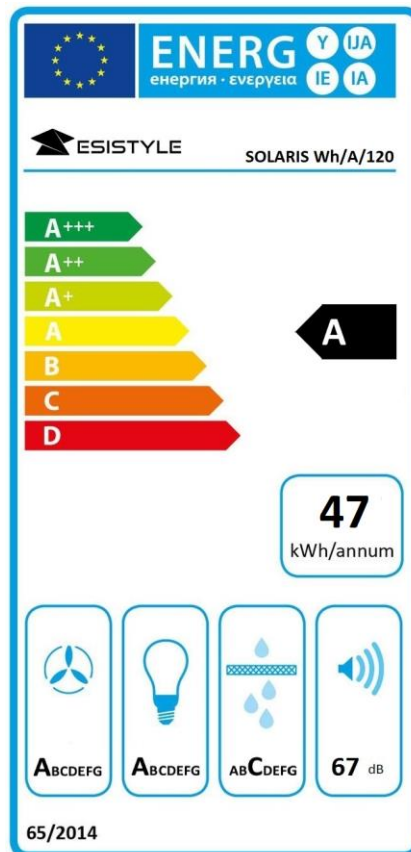
Installazione / Installation Soffitto incasso / Built-in Ceiling	Filtro Grassi / Grease Filter Filtro alluminio / Aluminium filter
Versione / Version Aspirante * / Suction air *	Alimentazione / Power supply 220-240 V / 50-60 Hz
Finitura / Finishing Acciaio / Steel	Pressione Efficienza Max / Max Efficiency Pressure 536 Pa
Colori / Colors Bianco / White	Portata IEC / Airflow IEC 758 m ³ /h
Comandi / Controls Radio comando 4V+2i / Remote control 4V+2i	Portata Intensiva / Booster Airflow 789 m ³ /h
Motore / Motor Radiale Brushless / Brushless Radial	Range Rumorosità / Noise Range 50 – 67 dB
Aria Pulita 24h /24h Clean Air 10 min (on) – 50 min (off)	Pulizia / Cleaning Max vel. 6 min / Max speed 6 min
Velocità temporizzata / Timed speed 15 min	Velocità intensiva / Temporized speed 5-6 vel. intensiva 6 min / 5-6 intensive speed 6 min
Illuminazione dinamica / Dinamic light Regolazione automatica da 2700 K a 6000 K / Automatic regulation from 2700 K to 6000 K	
Illuminazione / Lighting 120 cm Led light panel 28 W	Assorbimento totale / Total Absorption 120 cm 248 W

* Disponibile in versione Filtrante / Available in Recirculating version



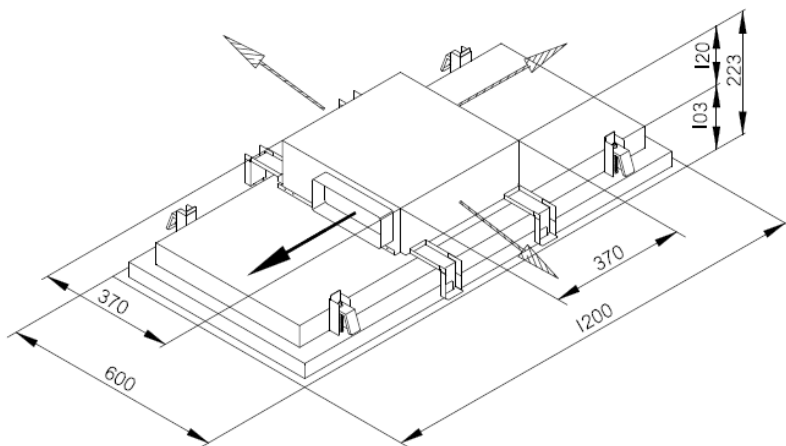
Modello / Model

SOLARIS Wh/A/120



Misure e dimensioni / Measurements and dimensions

Dim. cappa / Hood Dim.	120 cm
Peso netto / Net weight	31 Kg
Peso lordo / Gross weight	38,5 Kg
Volume	0,284 m ³
Dim. imballo / Package dim.	129 x 69 x 32 cm

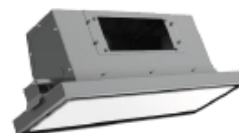


Accessori / Accessories

Kit filtrante / Recycling kit

Codici Kit FC / Kit FC Codes :

- E750000159 ceramico Wh



Misure e dimensioni KIT FC/ KIT FC Measurements and dimensions

Dim. Kit filtrante / Recycling kit Dim.	60 cm
Peso netto / Net weight	5 Kg
Peso lordo / Gross weight	8 Kg
Volume	0.097 m ³
Dim. imballo / Package dim.	65 x 34 x 44 cm

